

DOSSIER FOR SPACE RENTAL AND PRIVATE TOURS.

MUSEU
PICASSO



INDEX

02.
SPACES

01.
THE MUSEUM

04.
**CONTACT
INFORMATION**

03.
**PRIVATE TOURS
OF THE
COLLECTION**

01. THE MUSEUM



The Museu Picasso is one of the most renowned museums in Barcelona and is an essential resource for understanding the formative years of one of history's most influential artists, Pablo Picasso.

The Museu is housed across five palaces built between the thirteenth and fourteenth centuries, which are magnificent examples of Catalan Gothic architecture. These buildings make Montcada Street one of the city's most significant hubs of medieval civil architecture today.

Located in the Ribera district, the city's cultural, commercial and touristic heart, the Museu offers a unique and impressive space for institutions, companies and individuals to host private and corporate events.

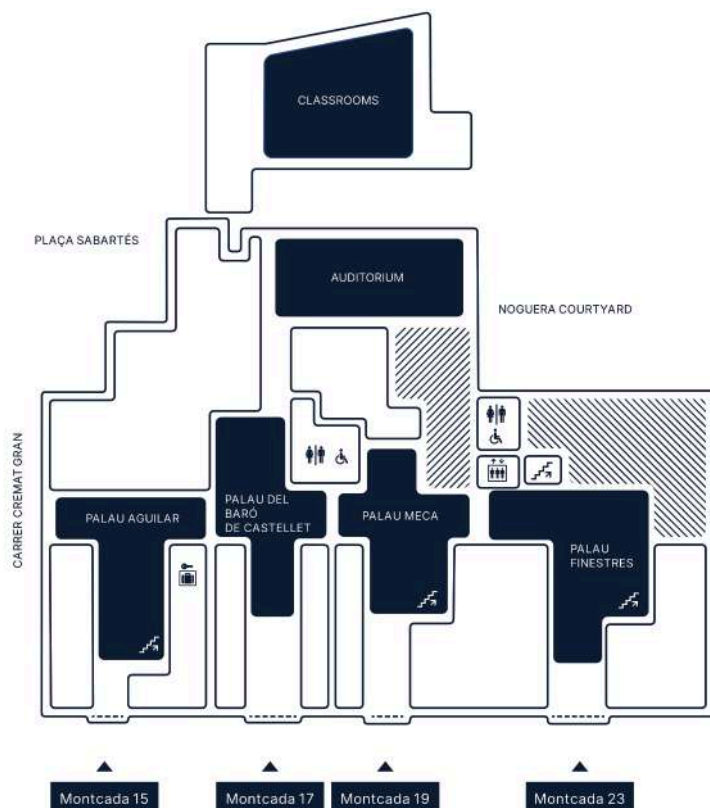


Picasso, Pablo. (1903). Azoteas de Barcelona. [Óleo sobre tela]. Museu Picasso de Barcelona.

02. SPACES

—

One of the Museu's most significant advantages is that all the palaces are interconnected, each with an independent entrance from Montcada Street, providing this exceptional historical and artistic enclave with great versatility.



THE SPACES AVAILABLE FOR CORPORATE AND PRIVATE EVENTS ARE:

PALAU AGUILAR
(Montcada Street, no.15)

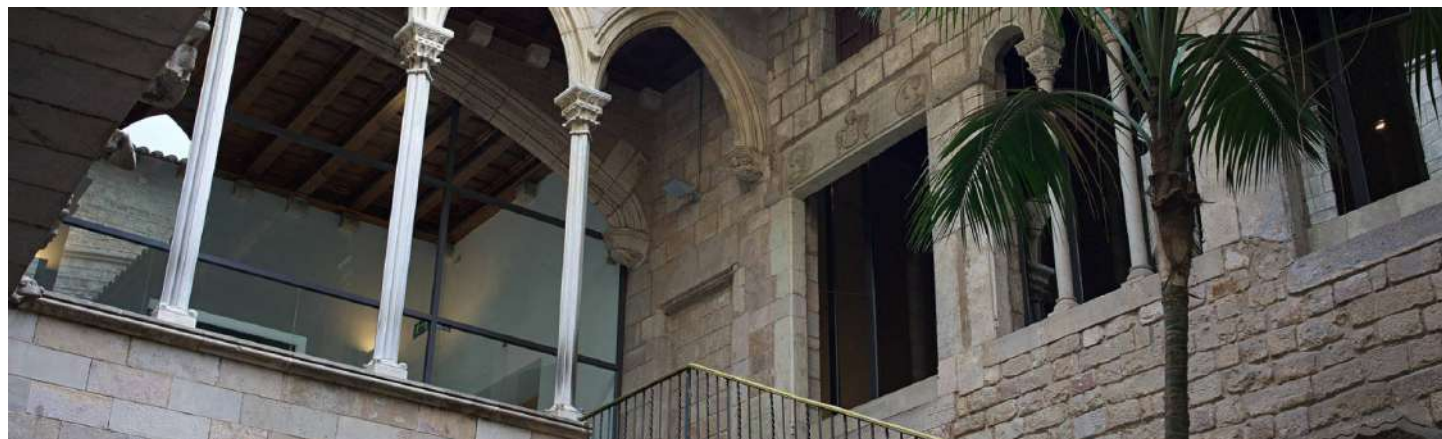
PALAU DEL BARÓ DE CASTELLET
(Montcada Street, no.17)

PALAU MECA
(Montcada Street, no. 19)

PALAU FINESTRES
(Montcada Street, no. 23)

AUDITORIUM
(entrance from plaza Jaume Sabartés or Montcada Street)

CLASSROOMS
(entrance from plaza Jaume Sabartés or Montcada Street)





SCHEDULES

On Mondays, the Museu's spaces are available from 10 a.m.

All corporate and private events must end before 11:30 p.m.

All events will take place when the Museu has closed to visitors and will be subject to its opening and closing hours.

PALAU AGUILAR

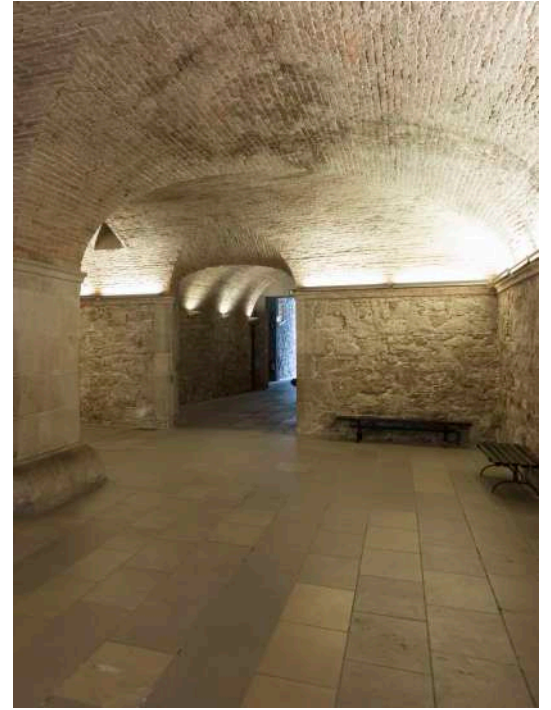
The Palau Aguilar, located at 15 Montcada Street, became the first space occupied by the Museu Picasso Barcelona in 1963. The original palace, dating from the thirteenth century, and the central courtyard, dating from the fifteenth century, are characterised by their pointed arches.



Its dimensions are ideal for standing cocktail parties, small-format dinners, or welcoming guests attending events held in other areas of the Museu.

SURFACE AREA: 68 m²
COCKTAIL: 80 people
BANQUET: 40 people
CONFERENCE OR PRESS
CONFERENCE: 40 people





PALAU BARÓ DE CASTELLET

The Palau del Baró de Castellet is a medieval palace dating back to the thirteenth and fourteenth centuries. Restored in the eighteenth century, it is the only space at the museum with a covered courtyard. With its central column and vaulted ceiling, this space is an incomparable setting for receptions, standing buffets and gala dinners.

SURFACE AREA: 135 m²
COCKTAIL: 90 people
BANQUET: 60 people
CONFERENCE OR PRESS CONFERENCE: 60 people



PALAU MECA

SURFACE AREA: 122 m²
COCKTAIL: 70 people
BANQUET: 40 people
CONFERENCE OR PRESS
CONFERENCE: 35 people

In the fifteenth century, the Palau Meca became the most important building in the block due to the social status of its owner, Ramon Desplà i Cavaller, a descendant of a political lineage. Although the 1714 bombardment of Barcelona partially destroyed the palace, its eighteenth-century renovation transformed it into a grand space. It can comfortably accommodate receptions, standing buffets, and gala dinners.





PALAU FINESTRES

Like the other palaces in the Museu Picasso, the Palau Finestres retains its original thirteenth-century structures. However, its courtyard is unique, given that it was built on the remains of a Roman city.

The floor plan outlines a spectacular series of rooms with vaulted ceilings, which can be combined with the spacious medieval courtyard. The most outstanding features are the uncovered staircase, the original stone handrail, and the semicircular arches at the top.

SURFACE AREA: 202 m²
COCKTAIL: 170 people
BANQUET: 80 people
CONFERENCE OR PRESS
CONFERENCE: 105 people





THE FOUR PALACES

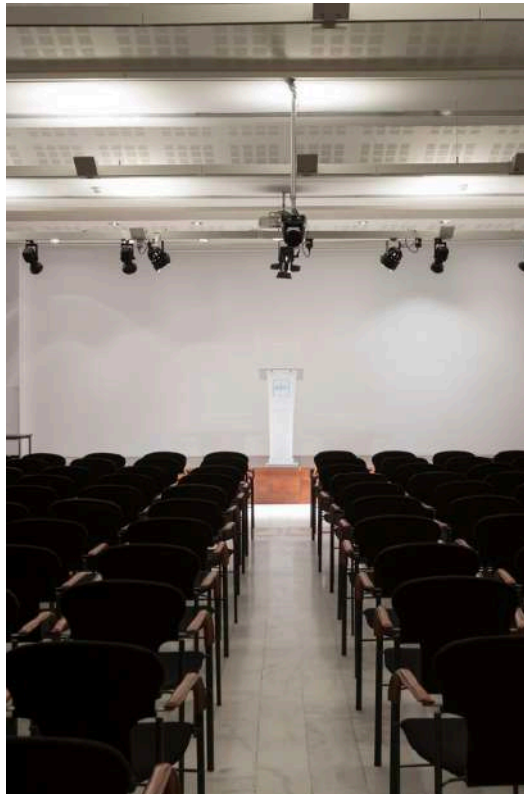
SURFACE: 527 m²
COCKTAIL: 410 people
BANQUET: 220 people
CONFERENCE OR PRESS
CONFERENCE: 240 people

A wide corridor connects the Museu Picasso Barcelona's four palaces, although they also have independent entrances from Montcada Street. Together, they form a unique historical and artistic enclave capable of hosting various events.

AUDITORIUM

The Museu also has an auditorium, which is fully equipped with an audiovisual system. Its location beside the Palau Baró de Castellet means it can be combined with other museum areas if several activities are being held at the same event.

This multipurpose and versatile space can host various events in combination with the Pati Noguera. It can be accessed from both Plaza Jaume Sabartés or Montcada Street.





AUDITORIUM

SURFACE AREA: 156 m²

COCKTAIL: 140 people

BANQUET: 60 people

CONFERENCE OR PRESS CONFERENCE: 120 people

Available equipment

2 wireless headset microphones

2 handheld wireless microphones

4 microphone stands

Computer, projector and camera for streaming or recording

Availability

Unlike the other spaces, this one is also available during the opening hours of the Museum, with access from Jaume Sabartés Square.

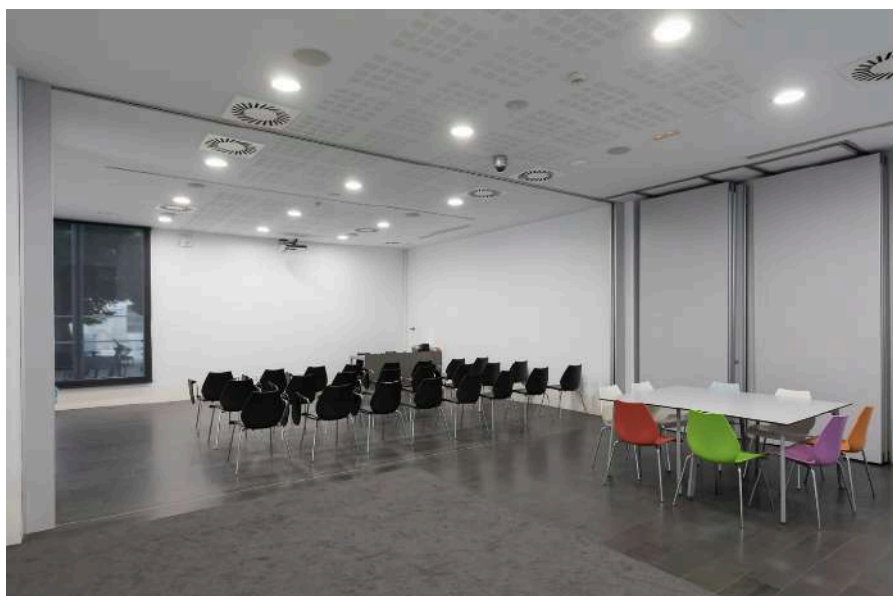
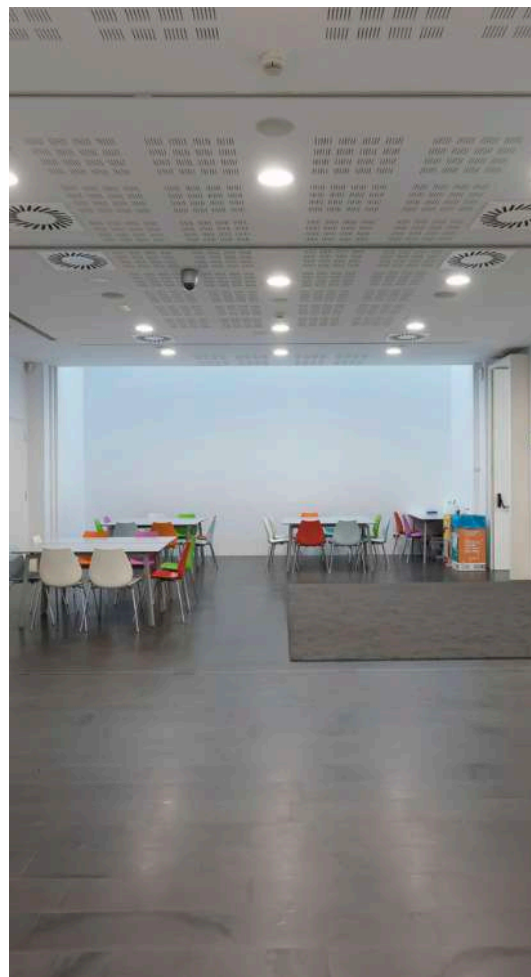
CLASS ROOMS

SURFACE AREA: 280 m²
COCKTAIL: 65 personas

TYPE 1. Conference or press conference: 55 people

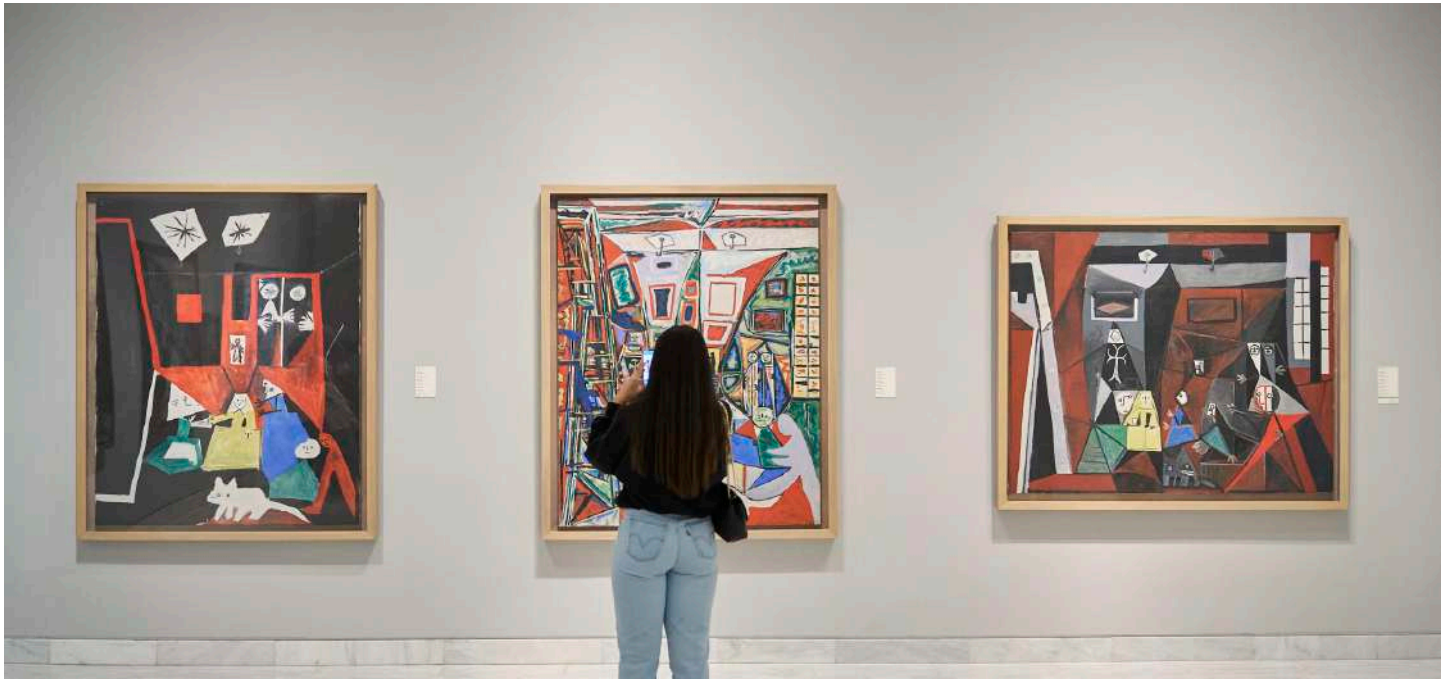
TYPE 2. Conference or press conference: 25 people

The Knowledge and Research Centre is a space dedicated to the study of the life and work of Pablo Picasso. It consists of the library, the archive and four interconnected classrooms, which can also be used independently. Two of them are equipped with computers, projectors and loudspeakers. They can be used for workshops, courses or presentations.



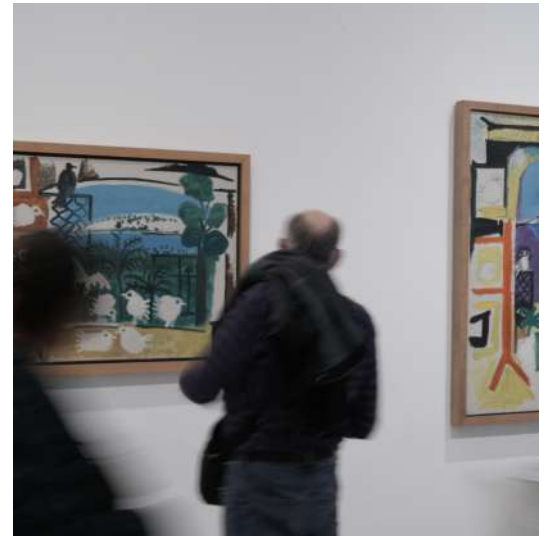
03. PRIVATE TOURS OF THE COLLECTION

Barcelona played a significant role in Picasso's life, as the city where he spent his formative years. The Museu Picasso Barcelona opened its doors in 1963, and its permanent collection includes more than 4,200 works.



The Museu offers private tours with specialist guides in different languages, allowing visitors to enjoy The Collection in a private and exclusive setting.

Private tours always take place outside the Museu's opening hours and last approximately one hour, depending on individual requirements.





04. CONTACT INFORMATION



Facebook: /MuseuPicassoBarcelona
Instagram: @museupicasso
LinkedIn: /museu-picasso-de-barcelona

www.museupicassobcn.cat

**15-23 Montcada Street,
08003, Barcelona.**

Telephone
932 563 000

E-mail
museupicasso_events@bcn.cat

